

# Milesian Manor Care Home



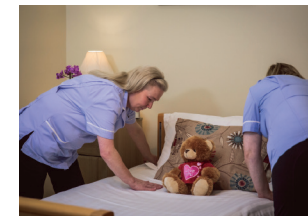


---

Milesian Manor is situated in beautiful landscaped gardens, on the edge of Magherafelt, nestled between the Sperrin Mountains and Lough Neagh, providing superb views of the surrounding countryside.

The Home derives its name from the Milesians who settled in Ireland in Anno Mundi 3500 and who are accepted as the Founders of Medical practice in Ireland.

We treat every resident as the individual they are, helping them settle in by including some familiar items from home, because we believe a home from home is exactly how a care home should feel.





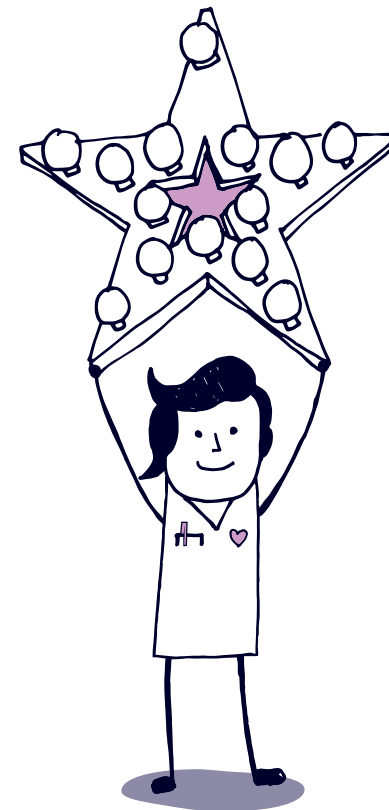
---

## We offer specialist care...

We offer the very best in elderly care with additional specialisms in the care of younger adults and physical disabilities.

### Care offered

- Nursing Care
- Respite Care
- Palliative Care
- Elderly Care



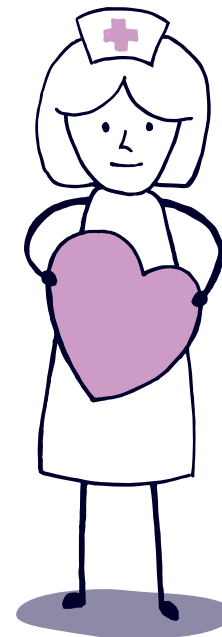


## We care for our residents

We care for our staff, we care that there are fresh flowers in our foyers, we care that our carpet is a thicker pile than normal because it's softer on the feet, we care when it's someone's birthday, or when someone just wants a friend to talk to.

We care that all our residents are served only the finest home-cooked food, that there is always fresh water on hand, that their laundry is taken care of and that respect and dignity are given at all times.

**We're there,  
because we care.**



care with heart



If you would like to visit the home and meet the team, we would be delighted to welcome you at any time. Please contact us as below.

**Milesian Manor Care Home**

9 Ballyheifer Road  
Magherfelt, BT45 5DX

028 7963 1842

[milesianmanor@macklingroup.com](mailto:milesianmanor@macklingroup.com)

**[macklincarehomes.com](http://macklincarehomes.com)**